



Demographic and Income Comparison Profile

Downtown Hamilton 2
 345 High St, Hamilton, Ohio, 45011
 Rings: 1, 3, 5 mile radii

Latitude: 39.39903
 Longitude: -84.55947

	1 mile	3 miles	5 miles
Census 2010 Summary			
Population	15,865	68,274	116,410
Households	5,423	26,467	44,360
Families	3,359	17,237	30,521
Average Household Size	2.72	2.52	2.58
Owner Occupied Housing Units	2,070	15,845	29,650
Renter Occupied Housing Units	3,353	10,622	14,710
Median Age	30.9	35.6	36.8
2014 Summary			
Population	15,947	68,096	116,409
Households	5,451	26,423	44,444
Families	3,316	16,942	30,162
Average Household Size	2.72	2.51	2.57
Owner Occupied Housing Units	1,931	15,163	28,750
Renter Occupied Housing Units	3,520	11,260	15,695
Median Age	31.4	36.2	37.5
Median Household Income	\$27,600	\$40,252	\$48,269
Average Household Income	\$39,180	\$52,500	\$61,533
2019 Summary			
Population	16,116	68,487	117,395
Households	5,508	26,564	44,821
Families	3,307	16,839	30,105
Average Household Size	2.72	2.52	2.57
Owner Occupied Housing Units	1,936	15,191	28,888
Renter Occupied Housing Units	3,572	11,373	15,933
Median Age	31.9	37.1	38.1
Median Household Income	\$31,431	\$48,000	\$55,348
Average Household Income	\$43,922	\$58,997	\$68,622
Trends: 2014-2019 Annual Rate			
Population	0.21%	0.11%	0.17%
Households	0.21%	0.11%	0.17%
Families	-0.05%	-0.12%	-0.04%
Owner Households	0.05%	0.04%	0.10%
Median Household Income	2.63%	3.58%	2.77%

Source: U.S. Census Bureau, Census 2010 Summary File 1. Esri forecasts for 2014 and 2019.



Demographic and Income Comparison Profile

Downtown Hamilton 2
 345 High St, Hamilton, Ohio, 45011
 Rings: 1, 3, 5 mile radii

Latitude: 39.39903
 Longitude: -84.55947

2014 Households by Income	1 mile		3 miles		5 miles	
	Number	Percent	Number	Percent	Number	Percent
<\$15,000	1,492	27.4%	4,589	17.4%	6,019	13.5%
\$15,000 - \$24,999	978	17.9%	3,568	13.5%	5,269	11.9%
\$25,000 - \$34,999	783	14.4%	3,265	12.4%	5,036	11.3%
\$35,000 - \$49,999	822	15.1%	4,151	15.7%	6,464	14.5%
\$50,000 - \$74,999	879	16.1%	5,562	21.0%	9,358	21.1%
\$75,000 - \$99,999	232	4.3%	2,683	10.2%	5,718	12.9%
\$100,000 - \$149,999	135	2.5%	1,699	6.4%	4,306	9.7%
\$150,000 - \$199,999	44	0.8%	536	2.0%	1,492	3.4%
\$200,000+	86	1.6%	369	1.4%	782	1.8%
Median Household Income	\$27,600		\$40,252		\$48,269	
Average Household Income	\$39,180		\$52,500		\$61,533	
Per Capita Income	\$14,018		\$20,489		\$23,529	

2019 Households by Income	1 mile		3 miles		5 miles	
	Number	Percent	Number	Percent	Number	Percent
<\$15,000	1,483	26.9%	4,327	16.3%	5,577	12.4%
\$15,000 - \$24,999	780	14.2%	2,689	10.1%	3,862	8.6%
\$25,000 - \$34,999	696	12.6%	2,781	10.5%	4,173	9.3%
\$35,000 - \$49,999	815	14.8%	3,879	14.6%	5,909	13.2%
\$50,000 - \$74,999	1,010	18.3%	5,934	22.3%	9,704	21.7%
\$75,000 - \$99,999	327	5.9%	3,465	13.0%	7,156	16.0%
\$100,000 - \$149,999	212	3.8%	2,262	8.5%	5,507	12.3%
\$150,000 - \$199,999	70	1.3%	721	2.7%	1,889	4.2%
\$200,000+	116	2.1%	506	1.9%	1,043	2.3%
Median Household Income	\$31,431		\$48,000		\$55,348	
Average Household Income	\$43,922		\$58,997		\$68,622	
Per Capita Income	\$15,785		\$23,039		\$26,256	

Data Note: Income is expressed in current dollars.

Source: U.S. Census Bureau, Census 2010 Summary File 1. Esri forecasts for 2014 and 2019.



Demographic and Income Comparison Profile

Downtown Hamilton 2
 345 High St, Hamilton, Ohio, 45011
 Rings: 1, 3, 5 mile radii

Latitude: 39.39903
 Longitude: -84.55947

2010 Population by Age	1 mile		3 miles		5 miles	
	Number	Percent	Number	Percent	Number	Percent
Age 0 - 4	1,511	9.5%	5,453	8.0%	8,604	7.4%
Age 5 - 9	1,204	7.6%	4,775	7.0%	8,245	7.1%
Age 10 - 14	1,138	7.2%	4,536	6.6%	8,172	7.0%
Age 15 - 19	1,104	7.0%	4,227	6.2%	7,553	6.5%
Age 20 - 24	1,349	8.5%	4,503	6.6%	6,992	6.0%
Age 25 - 34	2,659	16.8%	10,098	14.8%	15,811	13.6%
Age 35 - 44	2,126	13.4%	8,685	12.7%	15,347	13.2%
Age 45 - 54	2,141	13.5%	9,553	14.0%	17,284	14.8%
Age 55 - 64	1,464	9.2%	7,640	11.2%	13,579	11.7%
Age 65 - 74	675	4.3%	4,329	6.3%	7,582	6.5%
Age 75 - 84	372	2.3%	3,232	4.7%	5,277	4.5%
Age 85+	121	0.8%	1,244	1.8%	1,964	1.7%

2014 Population by Age	1 mile		3 miles		5 miles	
	Number	Percent	Number	Percent	Number	Percent
Age 0 - 4	1,425	8.9%	5,153	7.6%	8,148	7.0%
Age 5 - 9	1,325	8.3%	4,891	7.2%	8,126	7.0%
Age 10 - 14	1,109	7.0%	4,456	6.5%	7,895	6.8%
Age 15 - 19	1,102	6.9%	4,197	6.2%	7,373	6.3%
Age 20 - 24	1,282	8.0%	4,440	6.5%	7,305	6.3%
Age 25 - 34	2,666	16.7%	9,845	14.5%	15,666	13.5%
Age 35 - 44	2,106	13.2%	8,618	12.7%	14,805	12.7%
Age 45 - 54	1,970	12.4%	8,723	12.8%	15,880	13.6%
Age 55 - 64	1,647	10.3%	8,289	12.2%	14,928	12.8%
Age 65 - 74	832	5.2%	5,097	7.5%	8,992	7.7%
Age 75 - 84	357	2.2%	3,017	4.4%	5,112	4.4%
Age 85+	124	0.8%	1,370	2.0%	2,178	1.9%

2019 Population by Age	1 mile		3 miles		5 miles	
	Number	Percent	Number	Percent	Number	Percent
Age 0 - 4	1,436	8.9%	5,187	7.6%	8,265	7.0%
Age 5 - 9	1,266	7.9%	4,678	6.8%	7,819	6.7%
Age 10 - 14	1,199	7.4%	4,574	6.7%	7,898	6.7%
Age 15 - 19	1,092	6.8%	4,181	6.1%	7,259	6.2%
Age 20 - 24	1,270	7.9%	4,252	6.2%	6,935	5.9%
Age 25 - 34	2,572	16.0%	9,454	13.8%	15,636	13.3%
Age 35 - 44	2,107	13.1%	8,648	12.6%	14,786	12.6%
Age 45 - 54	1,843	11.4%	8,070	11.8%	14,512	12.4%
Age 55 - 64	1,727	10.7%	8,502	12.4%	15,375	13.1%
Age 65 - 74	1,029	6.4%	6,214	9.1%	10,977	9.4%
Age 75 - 84	433	2.7%	3,232	4.7%	5,541	4.7%
Age 85+	142	0.9%	1,494	2.2%	2,392	2.0%

Source: U.S. Census Bureau, Census 2010 Summary File 1. Esri forecasts for 2014 and 2019.



Demographic and Income Comparison Profile

Downtown Hamilton 2
 345 High St, Hamilton, Ohio, 45011
 Rings: 1, 3, 5 mile radii

Latitude: 39.39903
 Longitude: -84.55947

2010 Race and Ethnicity	1 mile		3 miles		5 miles	
	Number	Percent	Number	Percent	Number	Percent
White Alone	11,213	70.7%	58,083	85.1%	100,336	86.2%
Black Alone	2,780	17.5%	5,495	8.0%	8,732	7.5%
American Indian Alone	47	0.3%	152	0.2%	252	0.2%
Asian Alone	48	0.3%	457	0.7%	1,180	1.0%
Pacific Islander Alone	26	0.2%	50	0.1%	87	0.1%
Some Other Race Alone	1,117	7.0%	2,169	3.2%	3,117	2.7%
Two or More Races	634	4.0%	1,869	2.7%	2,705	2.3%
Hispanic Origin (Any Race)	1,949	12.3%	3,854	5.6%	5,680	4.9%

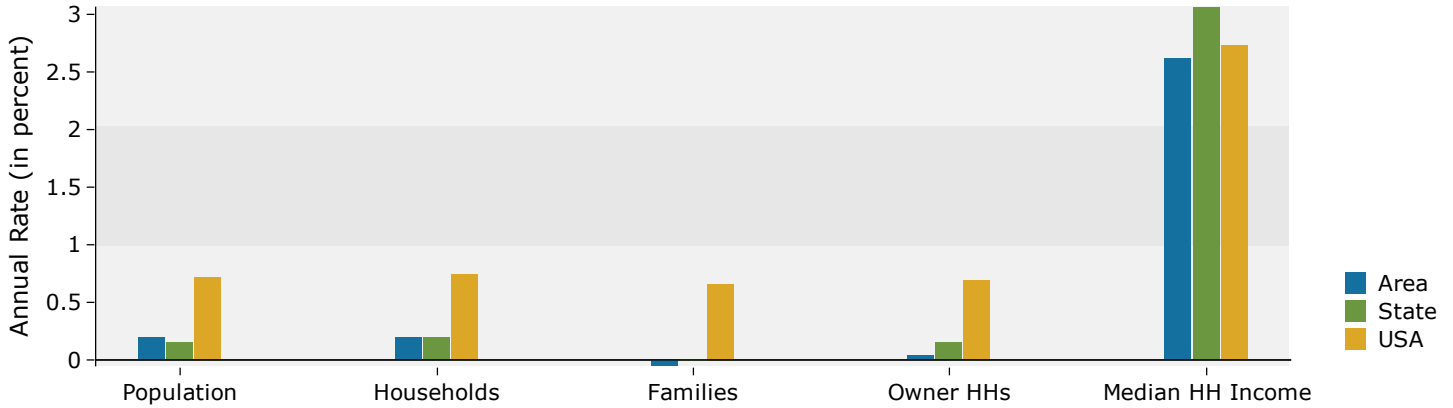
2014 Race and Ethnicity	1 mile		3 miles		5 miles	
	Number	Percent	Number	Percent	Number	Percent
White Alone	10,842	68.0%	56,748	83.3%	98,483	84.6%
Black Alone	2,924	18.3%	5,893	8.7%	9,484	8.1%
American Indian Alone	50	0.3%	160	0.2%	268	0.2%
Asian Alone	49	0.3%	496	0.7%	1,277	1.1%
Pacific Islander Alone	25	0.2%	49	0.1%	86	0.1%
Some Other Race Alone	1,351	8.5%	2,631	3.9%	3,735	3.2%
Two or More Races	704	4.4%	2,119	3.1%	3,076	2.6%
Hispanic Origin (Any Race)	2,341	14.7%	4,673	6.9%	6,820	5.9%

2019 Race and Ethnicity	1 mile		3 miles		5 miles	
	Number	Percent	Number	Percent	Number	Percent
White Alone	10,432	64.7%	55,485	81.0%	96,751	82.4%
Black Alone	3,107	19.3%	6,472	9.5%	10,570	9.0%
American Indian Alone	53	0.3%	166	0.2%	283	0.2%
Asian Alone	52	0.3%	564	0.8%	1,452	1.2%
Pacific Islander Alone	23	0.1%	47	0.1%	85	0.1%
Some Other Race Alone	1,643	10.2%	3,245	4.7%	4,592	3.9%
Two or More Races	806	5.0%	2,507	3.7%	3,662	3.1%
Hispanic Origin (Any Race)	2,862	17.8%	5,849	8.5%	8,536	7.3%

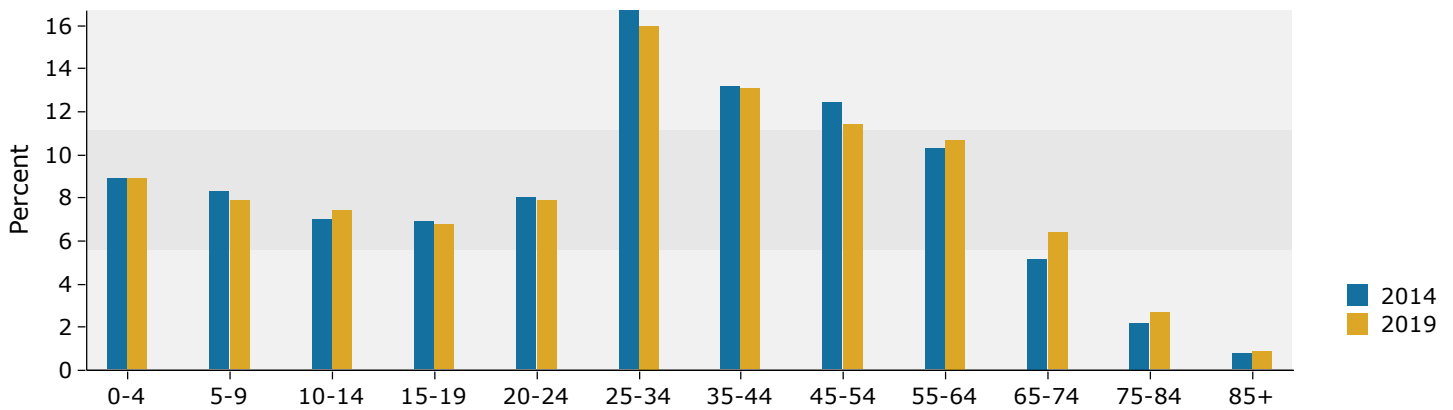
Source: U.S. Census Bureau, Census 2010 Summary File 1. Esri forecasts for 2014 and 2019.

1 mile

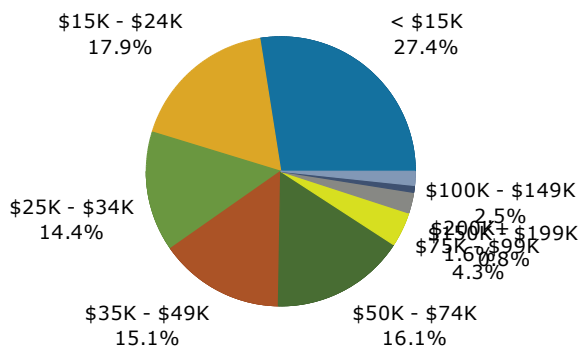
Trends 2014-2019



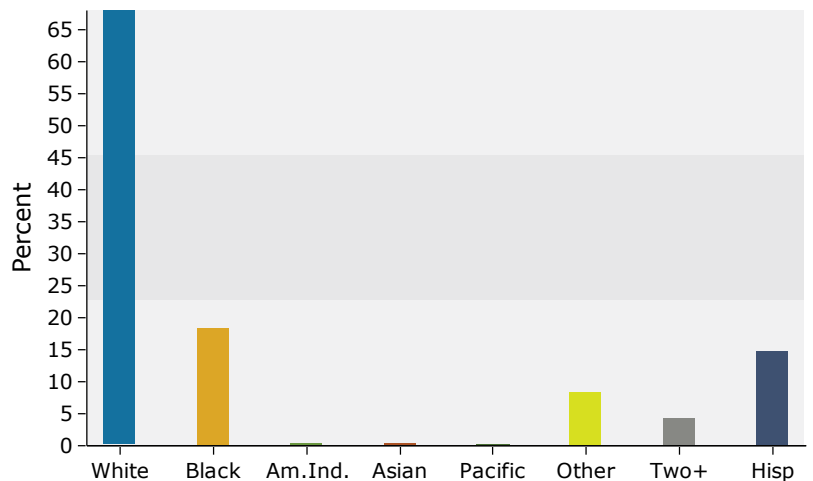
Population by Age



2014 Household Income



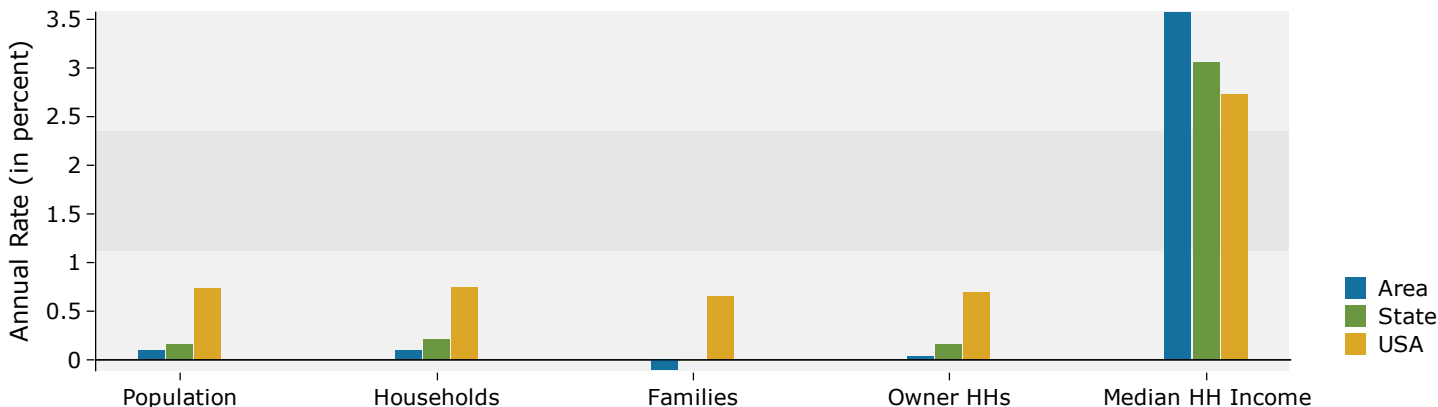
2014 Population by Race



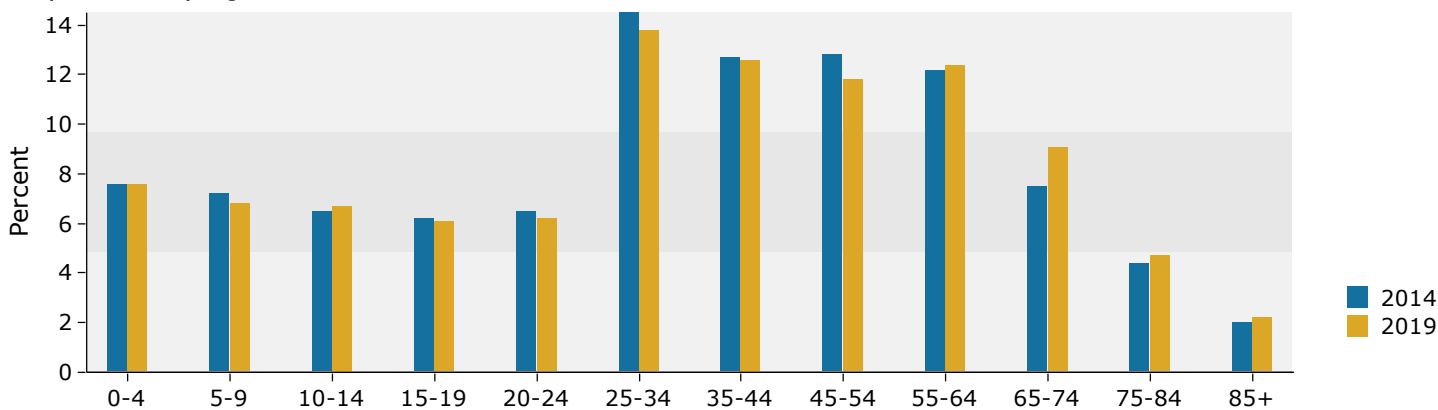
Source: U.S. Census Bureau, Census 2010 Summary File 1. Esri forecasts for 2014 and 2019.

3 miles

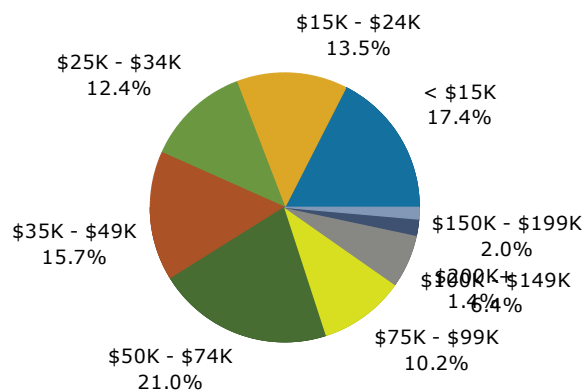
Trends 2014-2019



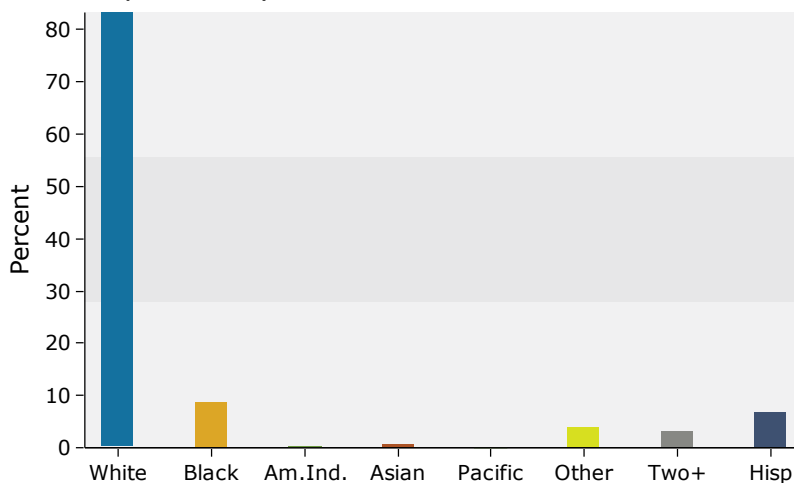
Population by Age



2014 Household Income



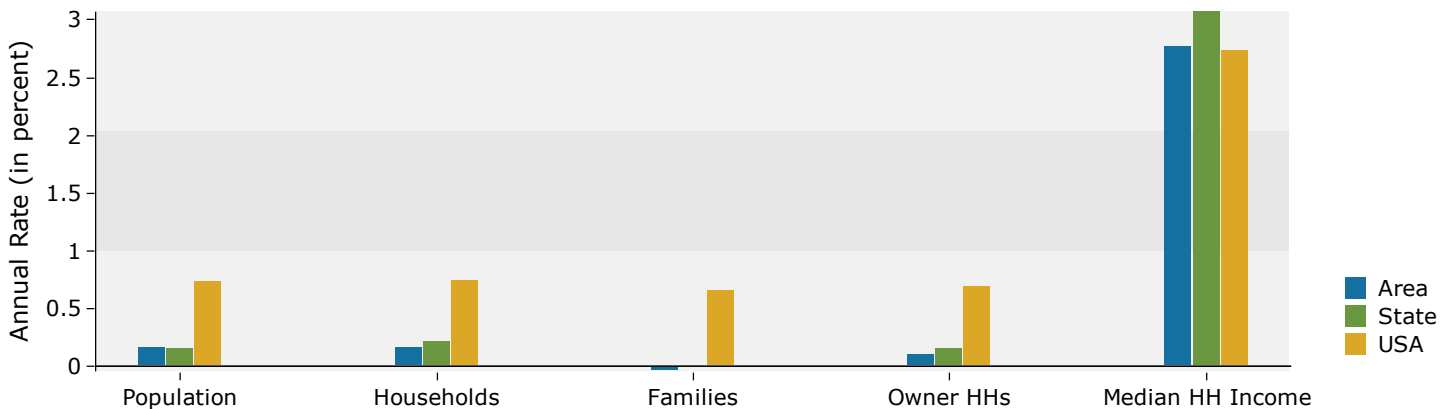
2014 Population by Race



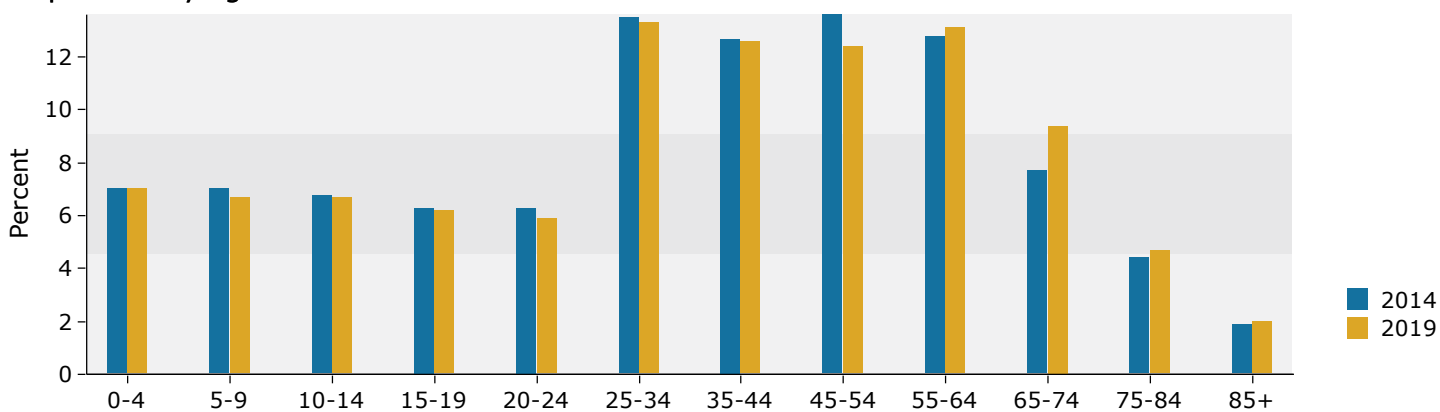
Source: U.S. Census Bureau, Census 2010 Summary File 1. Esri forecasts for 2014 and 2019.

5 miles

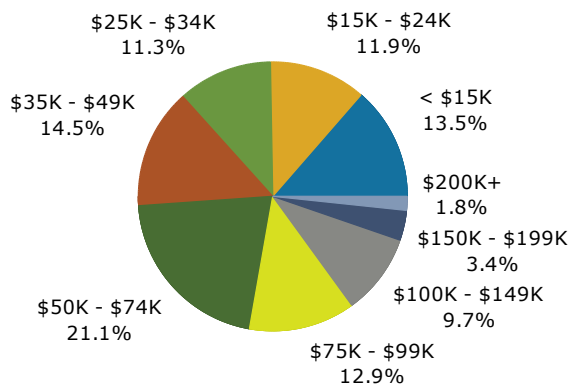
Trends 2014-2019



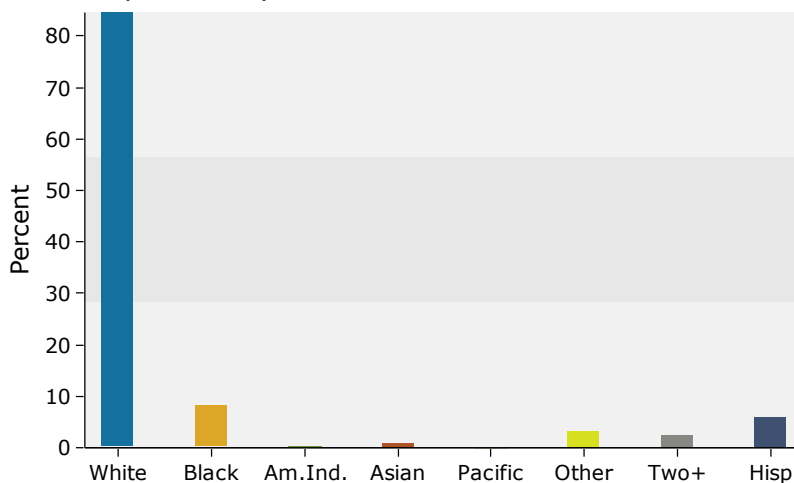
Population by Age



2014 Household Income



2014 Population by Race



Source: U.S. Census Bureau, Census 2010 Summary File 1. Esri forecasts for 2014 and 2019.